

Grounding Kits

Product Catalogue



Grounding Kits

Grounding kits. FIMO Grounding Kits offer multiple solutions for the earthing of coaxial cables, hybrid cables and elliptical and rectangular waveguides.

Kit di messa a terra. I kit di messa a terra FIMO offrono molteplici soluzioni per la connessione a massa di cavi coassiali, cavi ibridi e guide d'onda ellittiche e rettangolari.



CERTIFICATION

| | |
|------------------------------|-----------------------|
| Waterproof | IP 67 IEC 60529 |
| Lightning Test (CESI) | IEC 61312-1 grade III |
| Temperature Range | -50°/+80°C |
| Contact Resistance | <1 mOhm |

MATERIAL

| | |
|-------------------------|---|
| Contact Bar | Tinned Brass |
| Internal Contact | Tinned Copper Mesh |
| Protection | NAS Black Self-Agglomerating Tape, U.V. Resistant |
| Cable** | 16 mm ² Copper, P.E. Insulated Black, According to CEI 20-22 |
| Colour | Black |

UEK - Universal Earthing Kit

For coaxial cables and elliptic or rectangular waveguides.
Only five items for the whole cable range.
Easy to handle, safe, quick to install.
Complete with connecting cable.

UEK - Kit di Messa a Terra Universale

Per cavi coassiali e guide d'onda ellittiche e rettangolari. Solo cinque misure per tutta la gamma di cavi.
Semplice, sicuro, veloce.
Completo di cavo di connessione.

| CODE | ARTICLE | CABLE ø | COAX CABLES | ELLIPT. GUIDES | **L | CONNECTING SCREW | BAG | BOX | WEIGHT |
|--------------|---------|----------|---|-------------------------------|-----|------------------|-----|-----|--------|
| 61 1502 0001 | UEK 1 | 5 - 11 | RG 223 - RG58-RG59 RG 8 - RG213/214 1/4" - 3/8" | 220-380 | 500 | M8 | 1 | 10 | 145 |
| 61 1502 0002 | UEK 2 | 12 - 30 | 1/2"S - 3/8" - 1/2" - 5/8" 7/8"S - 7/8" | 105-127-130 150-190 | 500 | M8 | 1 | 10 | 180 |
| 61 1502 0003 | UEK 3 | 31 - 60 | 1.1/4" - 1.5/8" - 2.1/4" | 38-46-48-54 60-70-77-78-90 | 500 | M8 | 1 | 10 | 210 |
| 61 1502 0004 | UEK 4 | 40 - 115 | 1.1/4" - 1.5/8" 2.1/4" - 3"; 3.1/8" - 4.1/8" | 38-46-48-54 | 500 | M8 | 1 | 10 | 275 |
| 61 1502 0005 | UEK 5 | 40 - 223 | 1.1/4" - 1.5/8"; 2.1/4" - 3" 2.1/4" - 3"; 3.1/8" - 4.1/8" - 5"; 6.1/8" - 8" | 11-15-19-22 38-46-48-54 | 500 | M8 | 1 | 10 | 350 |

Storage : UEK kit does not require a particular care in storing, apart from keeping it in its original packing, which protects it from water, grease and dust. Even extreme temperature conditions do not negatively affect the product.

UEK M

Grounding Kits

UEK M - Monobloc Earthing Kit

For coaxial cables and elliptic or rectangular wave guides. Easy to handle, safe and quick to install. Earthing cable riveted directly to contact bar.

UEK M - Kit di Messa a Terra Monoblocco

Per cavi coassiali e guide d'onda ellittiche e rettangolari. Montaggio semplice, sicuro e veloce. Cavo di terra prefissato sul contatto mediante rivetti.

| CERTIFICATION | |
|-----------------------|-----------------------|
| Waterproof | IP 67 IEC 60529 |
| Lightning Test (CESI) | IEC 61312-1 grade III |
| Temperature Range | -50°/+80°C |
| Contact Resistance | <1 mOhm |

| MATERIAL | |
|------------------|--|
| Contact Bar | Tinned Brass |
| Rivets | AISI 304 Stainless Steel |
| Internal Contact | Tinned Copper Mesh |
| Protection | NAS Black Self-Agglomerating Tape, U.V. Resistant |
| Cable** | 16 mm ² Copper, P.E. Insulated Black, According to CEI 20-22 |
| Colour | Black |



| CODE | ARTICLE | CABLE ø | COAX CABLES | ELLIPT. GUIDES | **L | BAG | BOX | WEIGHT |
|--------------|---------|---------|--|---|-----|-----|-----|--------|
| 61 1505 0001 | UEK 1 M | 5 - 11 | RG 223 - RG58-RG59 RG 8 - RG 213/214; 1/4" - 3/8" | 220 - 250 - 380 | 500 | 1 | 10 | 180 |
| 61 1505 0002 | UEK 2 M | 12 - 30 | 1/2"S - 3/8" - 1/2" - 5/8" 7/8"S - 7/8" | 105 - 127 - 130 150 - 190 | 500 | 1 | 10 | 220 |
| 61 1505 0003 | UEK 3 M | 31 - 60 | 1.1/4" - 1.5/8" - 2.1/4" | 52 - 54 - 60 - 63 - 64 70 - 77 - 78 - 90 | 500 | 1 | 10 | 245 |

Storage : UEK M kit does not require a particular care in storing, apart from keeping it in its original packing, which protects it from water, grease and dust. Even extreme temperature conditions do not negatively affect the product.



UGK - Monobloc Earthing Kit

For coaxial cables and elliptic or rectangular waveguides.
Easy to handle, safe, quick to install.
Complete with connecting cable.

UGK - Kit di Messa a Terra Monoblocco

*Per cavi coassiali e guide d'onda ellittiche e rettangolari.
Semplice, sicuro, veloce.
Completo di cavo di connessione.*

CERTIFICATION

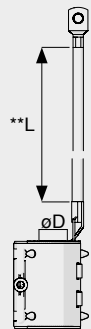
| | |
|--------------------------------|--------------------------|
| Waterproof | IP 67 IEC 60529 |
| Lightning Tested (CESI) | IEC 61312-1 grade III-IV |
| Temperature Range | -50°/+80°C |
| Contact Resistance | <1 mOhm |

MATERIAL

| | |
|-------------------------|---|
| Contact Bar | Tin-plated Copper |
| Rivets | AISI 304 Stainless Steel |
| Internal Contact | Tinned Copper Mesh |
| Protection | NAS Black Self-Agglomerating Tape, U.V. Resistant |
| Cable** | 16 mm ² Copper, P.E. Insulated Black, Ac- cording to CEI 20-22 |
| Colour | Black |

| CODE | ARTICLE | CABLE ø | COAX CABLES | ELLIPT. GUIDES | **L | BAG | BOX | WEIGHT (gr) |
|--------------|---------|---------|--|--|-----|-----|-----|-------------|
| 65 1502 0001 | UGK 1 | 5 - 11 | RG 223 - RG58-RG59 RG 8 - RG 213/214; 1/4" - 3/8" | 220 - 380 | 500 | 1 | 10 | 150 |
| 65 1502 0002 | UGK 2 | 12 - 30 | 1/2"S - 3/8" - 1/2" - 5/8" 7/8"S - 7/8" | 105 - 127 - 130 150 - 190 | 500 | 1 | 10 | 185 |
| 65 1502 0003 | UGK 3 | 31 - 60 | 1.1/4" - 1.5/8" - 2.1/4" | 52 - 54 - 60 - 63 - 64 - 65 70 - 77 - 78 - 90 | 500 | 1 | 10 | 220 |

Storage : UGK kit does not require a particular care in storing, apart from keeping it in its original packing, which protects it from water, grease and dust. Even extreme temperature conditions do not negatively affect the product.



• KMT
Open

• KMT
Closed

KMT P E - Grounding Kit
For Copper or Aluminum corrugated coaxial
Cables. Parallel Cable exit

Technical features:

- Compact structure
- Fast and easy installation
- Closure with a single screw
- Hinged rigid shell
- No loose parts
- No extra taping needed

KMT P E - Kit di Messa a Terra
per cavi coassiali corrugati, in rame o alluminio. Uscita parallela

Caratteristiche:

- Struttura compatta
- Installazione veloce
- Chiusura con una singola vite
- Guscio rigido incernierato
- Senza parti sciolte
- Nastatura supplementare non necessaria

| MATERIAL | |
|---------------|--|
| Shell | AISI 304 Stainless Steel |
| Gasket | EPDM Rubber U.V. Resistant |
| Inner Contact | Tinned Brass |
| Cable | 16 mm ² Copper (*10 mm ² copper), Black PVC Insulated, Conforming to CEI 20-22 norms (Yellow/Green on Request) |
| Lug | Tinned Copper, ø 8 Hole (ø10 on re- quest) |

| CERTIFICATION | |
|-----------------------|--------------------------------|
| Waterproof | IP 68 IEC 60529 (Fimo Test) |
| Environmental Test | IEC 68-2-14 |
| Contact Resistance | <1 mOhm |
| Lightning Test (CESI) | MIL STD 1757 |
| Corrosion Resistant | ✓ |

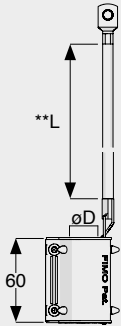
| CODE | ARTICLE | FOR COAXIAL CABLES | ø D | L | BOX | WEIGHT |
|--------------|-----------------|--------------------------------|-----|------|-----|--------|
| 61 1540 9006 | KMT 6 P E | RG 223-RG 58 (ø 5-6) | 19 | 500* | 10 | 240 |
| 61 1540 9007 | KMT 7 P E | RG59 (ø 6-7) | 19 | 500* | 10 | 215 |
| 61 1540 9009 | KMT 9 P E | 1/4" superflex (ø 8-9) | 19 | 500* | 10 | 240 |
| 61 1540 9014 | KMT 11 P E | RG 213/214-1/4"-3/8" (ø 10-11) | 19 | 500 | 10 | 235 |
| 61 1540 9016 | KMT 14- P E | 1/2" superflex (ø 13-14) | 25 | 500 | 10 | 246 |
| 61 1540 9012 | KMT 1/2"- P E | 1/2" (ø 16-17) | 25 | 500 | 10 | 242 |
| 61 1540 9078 | KMT 7/8"- P E | 7/8"+ 7/8" superflex (ø 26-28) | 36 | 500 | 10 | 258 |
| 61 1540 9114 | KMT 1.1/4"- P E | 1.1/4" (ø 38-40) | 48 | 500 | 10 | 480 |

CGK M

Compact Grounding Kits



GROUNDING KITS
PRODUCT CATALOGUE



CGK M >
Open

CGK M >
Closed



MATERIAL

| | |
|----------------------|--|
| Shell | AISI 304 Stainless Steel |
| Gasket | EPDM Rubber U.V. Resistant |
| Inner Contact | Tinned Brass |
| Cable** | 16 mm ² Copper, Black PVC Insulated, Conforming to CEI 20-22 Norms (yellow/green on request) |
| Lug | Tinned Copper, ø 8 hole (ø10 on request) |

CERTIFICATION

| | |
|----------------------------|--------------------------------|
| Waterproof | IP 68 IEC 60529 (Fimo Test) |
| Enviromental Test | IEC 68-2-14 |
| Contact Resistance | <1 mOhm |
| Corrision Resistant | ✓ |

CGK M - Compact Monobloc Grounding Kit For Copper or Aluminum RF Coaxial Cables. Parallel Cable Exit

Technical features:

- Compact structure
- Fast and easy installation
- Closure with pressure plate
- Flexible metal shell
- No loose parts
- No extra taping needed

CGK M - Kit di Terra Monoblocco Compatto Per Cavi Coassiali RF, in Rame o Alluminio. Uscita Parallela

Caratteristiche:

- *Struttura compatta*
- *Installazione veloce*
- *Chiusura con piastrino*
- *Guscio metallico deformabile*
- *Senza parti sciolte*
- *Nastratura supplementare non necessaria*

| CODE | ARTICLE | FOR COAXIAL CABLES | øD | **L | BOX | WEIGHT |
|--------------|--------------|-----------------------------------|----|-----|-----|--------|
| 61 1509 0016 | CGK 1/2" S M | ø d 13-14 (1/2" superflex) | 24 | 500 | 10 | 161 |
| 61 1509 0012 | CGK 1/2" M | ø d 16-17 (1/2") | 24 | 500 | 10 | 161 |
| 61 1509 0078 | CGK 7/8" M | ø d 26-28 (7/8" + 7/8" superflex) | 35 | 500 | 10 | 166 |
| 61 1509 0114 | CGK 1.1/4" M | ø d 38-40 (1.1/4") | 47 | 500 | 10 | 179 |

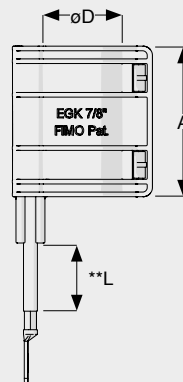


• EGK
Open

• EGK
Closed

| MATERIAL | |
|---------------|---|
| Shell | PA 6, U.V. Resistant |
| Sealant | Isobutylene Strip |
| Inner Contact | Tinned Brass |
| Cable** | 16 mm ² Copper, Black PVC Insulated, Conforming to CEI 20-22 Norms (yellow/green on request) |
| Lug | Tinned Copper, ø 8 hole (* ø10 on request) |

| CERTIFICATION | |
|--------------------|-----------------------------|
| Waterproof | IP 68 IEC 60529 (Fimo Test) |
| Contact Resistance | <1 mOhm |



EGK
No Tools Compact Grounding Kit With Plastic Shell

For Copper or Aluminum RF coaxial cables. Parallel cable exit.

Technical features:

- Compact plastic structure
- Fast and easy installation, without the use of tools
- No loose parts
- No lubricant required
- No extra taping needed

EGK
Kit di Terra Compatto con Guscio in Plastica, Installazione Senza Utensili.

Per cavi coassiali RF, in rame o alluminio. Uscita parallela.

Caratteristiche:

- Struttura compatta in plastica
- Installazione veloce senza l'utilizzo di utensili
- Senza parti sciolte
- Lubrificante non necessario
- Nastratura supplementare non necessaria

| CODE | ARTICLE | FOR COAXIAL CABLES | øD | **L | BOX | WEIGHT |
|--------------|--------------|-----------------------------------|------|-----|-----|--------|
| 61 1508 0012 | EGK 1/2" M | ø d 16-17 (1/2") | 26.5 | 500 | 10 | 145 |
| 61 1508 0078 | EGK 7/8" M | ø d 26-28 (7/8" + 7/8" superflex) | 37.5 | 500 | 10 | 152 |
| 61 1508 0114 | EGK 1.1/4" M | ø d 38-40 (1.1/4") | 49.5 | 500 | 10 | 158 |



Connecting Cable

FMT



MATERIAL

| | |
|------------------|---|
| Contact | Tin Plated Copper |
| Connecting Cable | P.E. Insulated Copper According to CEI 20-22. |
| Colour | Black |
| M8 Screws | AISI 304 Stainless Steel |

FMT 15/80 - Earthing Kit for Connectors

Complete with 16 mm² connecting cable.
Lightning test according to standard IEC 61312-1 grade III (CESI).

FMT 15/80 - Messa a Terra per Connettori

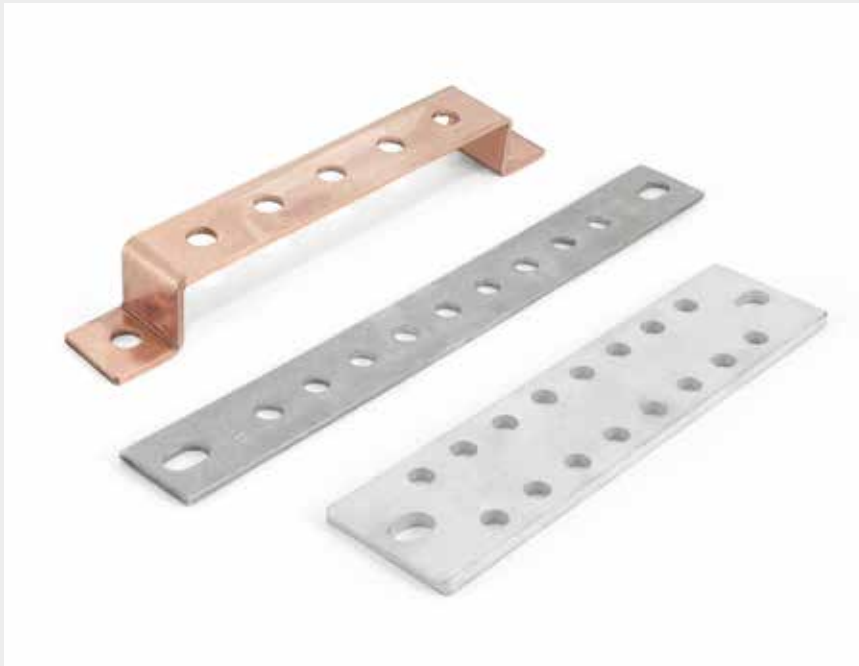
Completo di cavo di connessione 16 mm².
Testato alle scariche atmosferiche in accordo alla norma IEC 61312-1 grado III (CESI).

| CODE | ARTICLE | DESCRIPTION | FOR CONNECTORS | øD | BAG | BOX | WEIGHT |
|--------------|-----------|---|----------------|-------|-----|-----|--------|
| 61 1503 1580 | FMT 15/80 | Punched tinned copper strip 30x0,5, adjustable length | 1/4" - 2.1/4" | 15-80 | 10 | 100 | 170 |

BEI · BEC · BES

Grounding Bars

GROUNDING KITS
PRODUCT CATALOGUE



BEI - AISI 304 Grounding Bar
BEC - Copper Grounding Bars
BES - Tinned Copper Grounding Bars

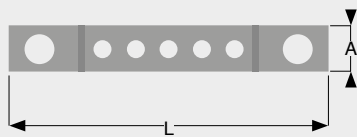
Suitable for **PMR** and **PPS** wall entries.

BEI - Barra Equipotenziale AISI 304
BEC - Barre Equipotenziali di Rame
BES - Barre Equipotenziali di Rame Stagnato

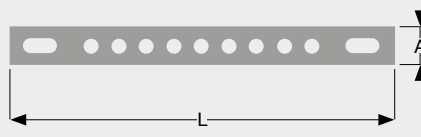
Applicabile ai passanti a muro PMR e PPS.

MATERIAL

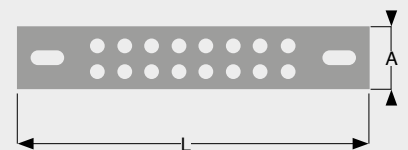
| | |
|------------|--------------------------|
| BEI | AISI 304 Stainless Steel |
| BEC | Copper |
| BES | Tinned Copper |



BEC



BEI / BEC / BES



BEI / BEC / BES

| CODE | ARTICLE/DESCRIPTION | L | A | N° HOLES | SHAPE | SUITABLE TO | BAG | BOX | WEIGHT |
|--------------|---------------------|-----|----|------------|---------|-------------|-----|-----|--------|
| 61 1517 9350 | BEI 9x8 | 250 | 30 | 9 x Ø 8.5 | FLAT | PMR - PPS | 1 | 10 | 235 |
| 61 1517 9352 | BEI 20xM8 | 300 | 40 | 20 x M8 | FLAT | - | 1 | 10 | 288 |
| 61 1517 0510 | BEC 5x10 | 215 | 30 | 5 x Ø 10,5 | ANGULAR | - | 1 | 10 | 210 |
| 61 1517 9300 | BEC 9xM8 | 250 | 30 | 9 x M8 | FLAT | PMR - PPS | 1 | 10 | 270 |
| 61 1517 9301 | BEC 16xM8 | 300 | 40 | 16 x M8 | FLAT | - | 1 | 10 | 470 |
| 61 1517 9302 | BEC 20xM8 | 300 | 40 | 20 x M8 | FLAT | - | 1 | 10 | 435 |
| 61 1517 9305 | BEC 28xM8 | 300 | 50 | 28 x M8 | FLAT | - | 1 | 10 | 667 |
| 61 1517 9304 | BES 5xM8 | 170 | 30 | 5 x M8 | FLAT | - | 1 | 10 | 136 |
| 61 1517 9306 | BES 16x8 | 200 | 50 | 16 x Ø 8.5 | FLAT | - | 1 | 10 | 445 |
| 61 1517 9307 | BES 16/2x8 | 250 | 50 | 16 x Ø 8.5 | FLAT | PMR - PPS | 1 | 10 | 556 |
| 61 1517 9303 | BES 20xM8 | 300 | 40 | 16 x M8 | FLAT | - | 1 | 10 | 320 |



ISO
Electrical Insulators

ISO Electrical Insulators are used to insulate grounding bars fixed on towers or other metal structures.

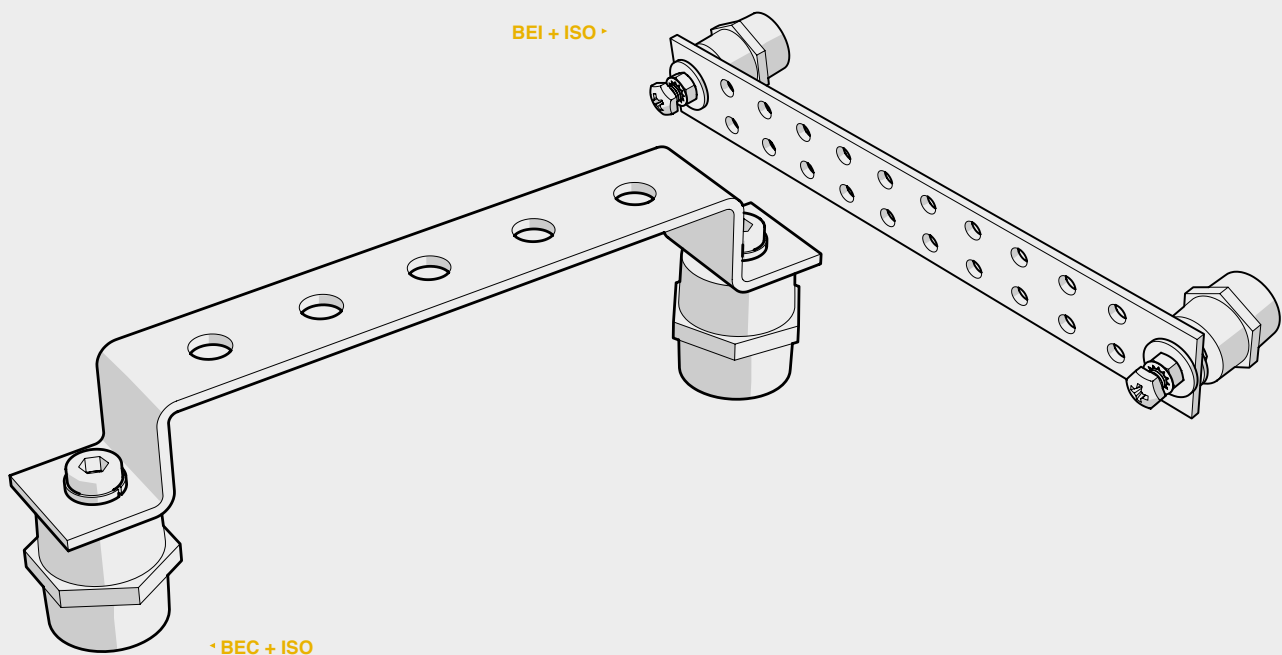
Installed between the equipotential bar and the metal structure, ISO insulators guarantee electrical insulation of the bar with respect to the structure.

ISO
Isolatori Elettrici per Barre Equipotenziali

Gli isolatori ISO sono usati per isolare le barre equipotenziali fissate alle torri o ad altre strutture metalliche. Installati tra la barra equipotenziali e la struttura metallica gli isolatori ISO garantiscono l'isolamento elettrico della barra rispetto alla struttura.

MATERIAL

Fiberglass Reinforced Polyester



| CODE | ARTICLE/DESCRIPTION | DIMENSIONS (mm) | THREAD | BOX | WEIGHT (gr) |
|--------------|---------------------|-----------------|--------|-----|-------------|
| 61 7001 0001 | ISO 3235 M8 | 32x35 | M8 | 10 | 60 |
| 61 7001 0002 | ISO 3030 M6 | 30x30 | M6 | 10 | 76 |

